

Global Placement Centre



Human Resource Services

- * HR Consultation
- * Executive Search
- * Skilled / Semi Skilled Workers
- * Engineering / Manufacturing Industry
- * Shipbuilding Industries
- * Port Workers / Drivers
- * Hotel / Catering / Services
- * Health care (Nurse)
- * Garments / Leather Industry
- * Expatriate Housing / Accommodation

GPC

Mr.C. Murugesan, managing partner the guiding force behind the birth of Global Placement Centre in Singapore Man Power Recruitment Circle and is a hard core technical executive having over twelve years of hands on experience in engineering industry and has been in man power recruitment business for the last twelve years. Over 10,000 young professionals who are helped and sent to Singapore, Malaysia and China for employment will vouch for the human touch and the commitment he shows in his approach.



Global Placement Centre Team.....

Mr.C. Murugesan is ably assisted by a committed team consisting of his brothers in India as well as in Singapore, partners, friends, qualified professionals, and specially skilled and trained executives.

Global Training Centre.....

Global Placement Team always says we are fighting against time and technology and human become obsolete and hence a need for training to hone and sharpen the skill and to avail the fruit of innovation. Keeping in mind this requirement as super specialty training centre is made available with modern machines and equipments and a hand held approach is followed to impart training to the trainees by highly experienced, qualified trainers who have returned from Singapore after serving MNCs over considerable period.

This training centre is equipped with well laid out machine shop with CNC machines, arc and gas welding machines, flame cutters, pipe cutters and conventional machines like grinding machine, lathe, drilling machine etc., As the trainees are expected to have an uninterrupted training, classrooms, boarding and lodging facilities are under one roof with all recreational facilities.

Keeping in mind the requirement of an ambience, an air conditioned interview room is made available in the middle of the training centre whereby the skill of the candidate can be judged by the clients on the spot while working.

Global Placement Centre can do for the candidates.....

Global Placement Centre never believes a square peg in a round hole. They understand the strength and weakness of the candidates and match their profile with that of the requirement of the clients and then offer them the employment. If there is any uneasiness in the mind of the candidate, they patiently listen to him and immediately rescue him from the trouble whether it is from employer, or any other genuine reasons by suitably counseling and if necessary take it up with concerned.

After successful recruitment, Global Training Centre is also responsible in getting the required visa, work permit and puts the candidates gently abroad the plane for a bonvoyage. In Singapore the candidates are warmly received and helped to get all required formalities completed and inducted seamlessly with their employers. Wherever they require arrangements for their stay, again without any hesitation search is made for suitable accommodation and they are housed comfortably.

Global Placement Centre... a total man power solution provider.

GPC is admired by thier clients for one simple reason. "GPC is a total manpower solution provider with out any compromise". Right from the stage- approval taken by clients from Man Power Dept., Singapore, We co-ordinates with the clients for the activities like travel plan, stay, written test, recruitment, medical testing induction etc.,

Our team conducts pre recruitment activities like release of advertisements, scrutinizing and short listing cvs and ensures the clients get only the best candidates. For any reason beyond the control, if a candidate is not able to discharge his duties to the satisfaction of the employer, We arranges replacement and ensures the clients are not put into any inconvenience and that is the secret of our's success.





Interview Room-I



Interview Room-II



Interview Room-III

ABOUT US

Every organization whether large or small require skilled manpower to survive and succeed in a fast changing environment.

Global Placement Center caters to the HR requirements of a large number of companies. Benefits of getting associated with Global Placement Centre

Data Bank : A unique feature is our computerized and personally managed Data bank.

Tie-Up : We are affiliated with one of India's leading job site, which has a strong database across all cities and industries.

Diversity : We cater to clients in all Industries.

Just-in-time service : You get quick response from our professional and dedicated team.

Professional Approach:

- Global Placement Center has a team of professionals who are experts in identifying, short-listing the candidates as per the client requirements.
- Assured Confidentiality: We maintain the highest level of confidentiality of information about client organizations and candidates.
- Cost Effective and Time Saving: You save on time and cost of recruiting through newspaper.
- Our professionals give personalized service most suited to each client's needs.

Recruitment Procedure:

GPC' s Responsibility

Global Placement Centre prefers selection of workers by the employer's representative. For this, GPC will extend all facilities to the employer including arrangement of Trade Test, if require, for selection of technical people. GPC may also be entrusted with this responsibility, who can ensure selection of the right person for the right trade as per criteria given by the employer.

GPC performs the following activities :

- Obtain recruitment permission from the government agencies.
- Advertisement in reputed daily newspaper applicants. if necessary.
- Collection of applications.
- Primary selection by our Exports.
- Conduct final interview by Employer's representatives.
- Obtain Passport for the selected candidates.
- Medical Examination of the candidates.
- Obtain Police Clearance.
- Obtain Medical Fitness certificate, photographs and related documents.
- Stamping of visa from the respective Embassy.
- Obtain Emigration clearance from the government agency.
- Travel arrangement including confirmation of seats with Airlines.
- Constant contact with the employer informing the development of the total arrangement.
- Attend airport to ensure smooth boarding of the Passengers.
- Inform employer over fax / telephone about the actual number of workers despatched / boarded finally.
- Arrangement of proper and timely replacement of worker, if anyone is found professionally or medically unfit with in the probation period.
- Ensure workers reach the country of work with in 20-25 days from the date of receipt of their visa/visa advice/calling visa from the employer, even earlier in case of emergency of employer.
- Arrangement of flights in groups.
- Proper briefing to the workers about eh social, political, legal, cultural and environmental aspects of the host country to boost up moral strength that helps in up keeping the existing relationship between the countries.
- Handover copy of employment contract to the workers before their departure for the work .
- Briefing of the workers about the actual terms of employment prior to their departure.
- Attend employer's call to solve unforeseen problems that may arise within the full contact duration.



Agency Appointment Formalities

To meet the requirements of the Ministry of Overseas Indian Affairs, a foreign employer needs to prepare the following documents:

1. AGENCY AGREEMENT :

This agreement is made between the employer and Global Placement Centre, stating fully and precisely all terms and conditions regarding manpower supply from India.

2. DEMAND LETTER :

A formal letter issued by the employer addressing Global Placement Centre with full details of job categories, Number of workers, Monthly salary, Contract period, Working hours and all other facilities i.e. Accommodation, Food, Medical, Air passage etc.

3. POWER OF ATTORNEY :

A letter issued by the employer authorising Global Placement Centre to act on behalf of the employer in recruiting demanded workers and to carry out all necessary formalities related with the respective Embassy and the related agencies of the Government of India.

4. CONSULAR LETTER :

This letter is also issued by the employer addressing the Consulate General of the respective Embassy intimating him regarding the appointment of Global Placement Centre as employer's agent and their authorisation to act on employer's behalf to carry out all visa formalities with the Embassy, by mentioning the visa No. and its issue date.

5. VISA ADVICE :

A photo copy of visa advice stamped and signed by the employer.



We have well-found professionals from India, China, Philippines, Vietnam, Myanmar, Taiwan, and Indonesia fill undeniably any opening you may have in the hospitality segment, here are some pros we are willingly able to source.



- Accountants Staff
- Assistant Managers
- Bar & Pub Staff
- Bell Boys
- Captains and Stewards
- Catering Manager
- Chef De Parties
- Commies and assistant Chefs
- Food Servers
- Front Office Staffs
- Head Waiters
- Hotel Cleaners**
- House Keeping Staffs
- Kitchen Staff
- Kitchen Assistants
- Management Trainees**
- Managerial Staffs
- Maintenance Staffs
- Restaurants Managers
- North/South Indian, Continental, Chinese, European, and Thai Chefs
- Restaurants Staffs
- Room Attendants
- Sous and Head Chefs; Indian, Tandoor
- Shift Manager
- Trainee Staffs
- Waiters & Waitress



Sector - Healthcare industry

Medical officers

Physiotherapist

Staff nurse

Enrollment nurse

Nursing assistant





Our Training Centre

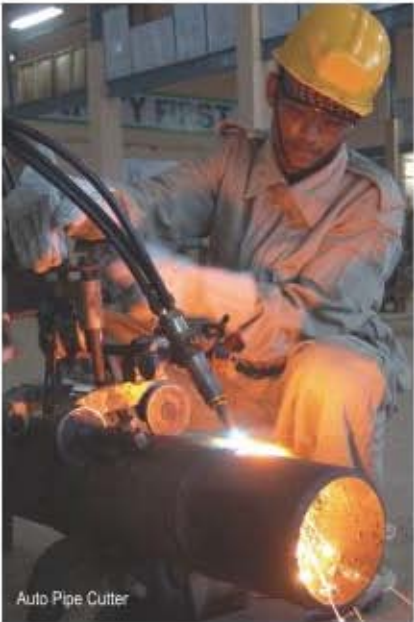


The infrastructure of the training centre.....

The Training Centre admeasuring 35,000 sq.ft is housed in a plot of 45,000 sq.ft with proper ventilation and natural light. The centre has well laid out, well lit class rooms, work shop area, aircon interview rooms, waiting hall etc.,At a given time 30 welders and 20 fitters can be examined for the practical sessions. The training program is a residential one and all inmates are accommodated in the hostel situated inside the premises itself. The centre has all training needs and has the following equipments.

Submersible ARC welding machine
CO₂ Welding Machine
6G TIG / ARC welding machine
4G welding machine
Gas cutting set
Auto cutting [Pipe]
Pug cutting [Plate]
Lathe, Drilling machine
Band Saw machine
Grinders & Measuring Equipments / Instruments





Auto Pipe Cutter



Auto Fug(Plate)



Pipe Fitting



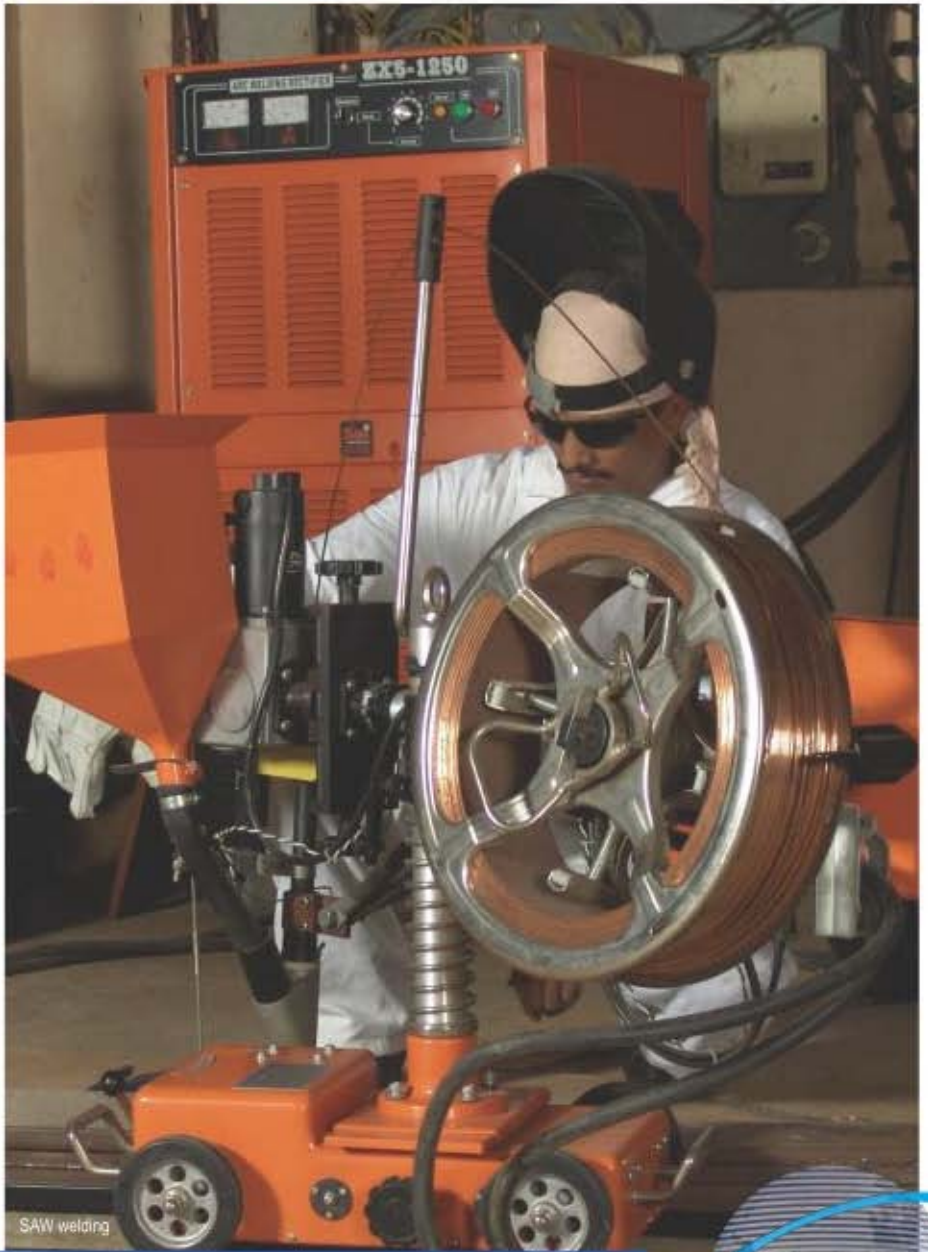
CNC Machining



Stainless Steel Welding



4G welding



SAW welding





Welding Booths



Spray Painting



6G TIG Welding



Tool Room



Stainless Steel Welding



Diesel Mechanism



SONY

Sony Electronics (Singapore) Pte. Ltd.
SDS 1 Tuas Road Singapore 638481
Telephone: 68618686 Facsimile: 68611344
Co. Reg No. 199000682 N

12th October 2006

Global Placement Centre
F-11, 3rd Floor, New No 5, 10th Avenue, Ashok Nagar
Chennai -600 083

SPECIAL POWER OF ATTORNEY

Sony Display Device (Singapore) with address at 1, Tuas Road Singapore 638481 has appointed Global Placement Centre at F-11, 3rd Floor, New No. 5, 10th Avenue, Ashok Nagar, Chennai -600 083, License No. 4685 / Chennai/300/5/7258/2005 as its true and lawful attorney-in-fact, its name and place to do the following acts and deeds, to wit:

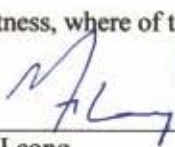
- 1) To represent our company before any government agencies in India relating to contract workers
- 2) To assist and coordinate in order to Administer on behalf of our Company all contract with recruited workers for oversea employment
- 3) To sign, authenticate, and deliver all documents necessary to complete any transaction to such recruitment and hiring, including facilitating the departure of the recruited workers.
- 4) To bring suit, enter into comprises in my name and stead, in litigations brought for or against the company in all matters involving the employment of Indian workers
- 5) To assume jointly and severally with our company and any liability that may arise in connection with the workers recruitment and / or implementation of the employment contract and other terms and conditions of the appointment as defined and spelled out in the agreement

Hereby granting unto our said Attorney-in-fact all power and authority to do and or perform

any and every act and things whatsoever requisite or necessary or proper to be done in and about the premises fully for all intents and purposes as the company might or lawfully do it acting through its duly constituted officers, and hereby rectifying and confirming all that said

Attorney-in-fact shall fully do or cause to be done and /or virtue of these present.

In witness, where of the parties have hereunto their signature on 12th October 2006


Amy Leong
Assistant Manager
Human Resources Division



Welding Samples



WATER PROOFING



STEEL REINFORCEMENT



PLUMBING & PIPE FITTING



ALUMINIUM FORM WORK



ACOUSTICAL CEILING





The centre has a ray of ergonomically designed welding booths with all controls within the easy access of the welder to maintain the highest quality standards. The specially designed welding machine with ten remote control units give uniform current output to ensure the welding quality. The centre has well qualified and rich experienced trainers in each field. The training program consists of theoretical class and practical sessions. Special emphasis is given to ENVIRONMENT, HEALTH, SAFETY aspects and trainees are taught the importance on this .



OUR SERVICES....

On behalf of our clients, we Advertise, Interview, Carry out Trade Tests, Arrange for Medical Examination, Visa-Emigration, Orientations, Recruit Personnel and provide follow up service. We offer 90 days guarantee for each person recruited and will replace any worker who within a period of 90 days is found to be in-competent to carry out the duty he was contracted to perform.

To Candidate

- (a) Arrange for Visa/Visa Stamping.
- (b) Arrange for Jobs.
- (c) Arrange for Medical etc.

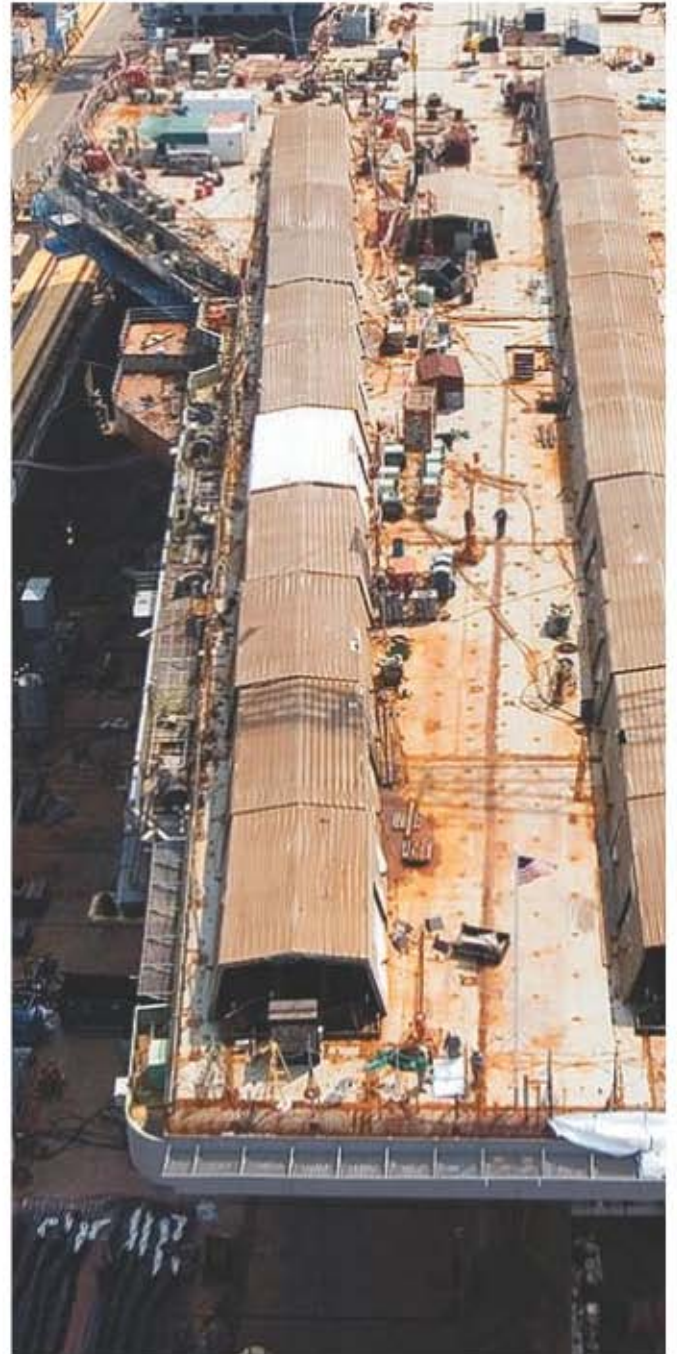
To Client

- (a) Arrange for Travel Arrangements / Re-confirmation.
- (b) Hotel Bookings.
- (c) Pick up from Airport, Hotel & vice versa.
- (d) If necessary a dedicated person will be assigned to co-ordinate with the client Authorized representative.

We are providing Services in the following Sector

Hotel Industry

- Chef
- Assistant Chef
- Hygienic Inspector
- Captain
- Waiter
- Service Boy





Manufacturing Industry

1. Engineers (Mechanical / Electrical / Chemical)
2. Designers (Mould / Tool / AutoCAD)
3. Programmers (UG /PRO E /PLC)
4. Draftsman (AutoCAD)
5. Mould makers / Toolmakers / Mould Assembler / Mould Polishers
6. CNC Miller / CNC Turners
7. Wire cut / EDM Technicians / Injection Moulding Technicians
8. Conventional Machinist (Miller / Turner)
9. Grinders (Surface / Cylindrical / Optical Profile)
10. Electricians
11. Chemical / Electro Plating Technicians
12. Sheet metal Fabricators / Duct Fabricators
13. Air-Conditioner Technician / Diesel Mechanics
14. Tailors / Ironers
15. Leather Technicians



Global Training Centre

Global Training Centre was formed with the sole Objective of bringing out the best of the candidates by rigorous training, proper guidance and strict evaluation. GLOBAL TRAINING CENTRE imparts training to trainees in various industries like Engineering, Ship Building , Chemical , Food , Leather , Electronics etc. It has all required infrastructure and Equipments with Qualified / Experienced faculty. The core training is Ship Building Industry covers Welding , Pipe fitting , Steel fitting , Spray painting, Mechanical fitting, Electrical and Diesel Mechanism. Similarly to impart highly specialized training in Engineering Industry especially in making Global Training in CNC machines , Vertical / Horizontal milling Centre and Conventional machines like Lathe , Milling , M/C etc.



Over the years the skill sets we have supplied are ...

ENGINEERS

Electrical Engineers (Termination)
Piping Engineers
Painting Engineers
HULL / Outfitting Engineers
Welding Engineers
Safety Engineers
NTD Technicians

TECHNICIANS

Co₂ Welders
6G TIG / ARC Welder
6G ARC Welders
4G Welders / 3G Welders
Mechanical Fitters
STEEL Fitters
PIPE Fitters
General Fitters
Electrical Terminators
Scaffolders
Spray Painters

**Over the Years
We have supplied
our candidates to ...**



SHIP BUILDING INDUSTRIES

CHIEFTAIN consulting & services Pte Ltd.
DME Contractors Pte Ltd.
FOOFAN Marine Pte Ltd.
FOONGAN Marine Pte Ltd.
FOURSEAS Engineering Pte Ltd.
FRANKHENG Marine Pte Ltd.
GLOBAL Marine Pte Ltd.
HAI SEE Marine Pte Ltd.
JURONG Shipyard Pte Ltd.
JURONG Integrated Services Pte Ltd.
JURONG Machinery & Automation Pte Ltd.

JURONG Autoblaster Services Pte Ltd
JURONG SML Pte Ltd.
JPL Services Pte Ltd.
KEPPEL Shipyard Ltd.
KOKCHANG Marine Services
KONG HANG Metal Polishing
LMH Marine Pte Ltd.
NHS Marine Pte Ltd.
RED EAGLE Marine Pte Ltd.
HALDA TECHNOLOGY Pte Ltd.
SIN HONG THAI Engineering Pte Ltd.
PPL Shipyard Pte Ltd.

RED EAGLE Marine Pte Ltd.
ROYSCAN Engineering Pte Ltd.
SEAH Marine Pte Ltd.
SINGFOOK Marine Pte Ltd.
SYNCHRON Marine Pte Ltd.
SIN Electrical Pte Ltd.
ST Marine Ltd.
SUNRAY Marine & Engineering Pte Ltd.
TRIDENT Offshore Engineering Pte Ltd.
UNIVERSAL HULL Private Limited
WAH SOON Marine Pte Ltd.
ZY Marine Pte Ltd.

CLIENTS

MANUFACTURING SECTOR

SINGAPORE

ACOT PRECISION ENGINEERING PTE LTD
ALDA TECHNOLOGIES SERVICES PTE LTD
AMOULD PLASTIC INDUSTRIES PTE LTD
AMKOR TECHNOLOGY SINGAPORE PTE LTD
AIRFOIL TECHNOLOGIES INTERNATIONAL PTE LTD
BANSHING INDUSTRIAL CO PTE LTD
BMS TECHNOLOGY PTE LTD.
CACTUS ENGINEERING & TRADING PTE LTD
COMBINE TOOLING & ENGINEERING
COMPLEX TOOLING PTE LTD
DIETHLEM KELLER PTE LTD
DISK PRECISION INDUSTRIES PTE LTD
DYNAMOLD PRECISION PTE LTD.
ERATECH INDUSTRIAL ENGINEERING
FEIMUS ENGINEERING PTE LTD
FIRST PRINTERS PTE LTD
FUJIPLA ENGINEERING (S) P/L
FULL SKILL WIRE CUT SERVICES
GLOBAL MOULD MANUFACTURING PTE LTD
GRAHAMTEK SINGAPORE PTE LTD
GRANT PRIDECO (SINGAPORE) PTE LTD
HI-P INTERNATIONAL PTE LTD
HOSPIMEK PTE LTD
HTL LEATHER PTE LTD.
HUP FATT BROS ENGRG PTE LTD.
HISAKA SINGAPORE PTE LTD
GE AVIATION SERVICES OPERATION LLP
INVO-TECH ENGINEERING PTE LTD
JOVAN TECH PTE LTD.
KAISER PRECISION ENGRG PTE LTD.
KNIGHT ANTO PRECISION ENGINEERING PTE LTD
KUNDA INDUSTRIES PTE LTD
KATO SPRING (S) PTE LTD.
L & W MOULD MANUFACTURING PTE LTD
MAKE YIELD STAINLESS INDS PTE LTD
MURATA ELECTRONICS SINGAPORE
MAZDA PLASTIC FACTORY PTE LTD
MC PACKAGING P LTD.
METAL CRAFT PRECISION INDS
MJ PRECISION TOOLS PTE LTD.
NAKANO METAL PRESS (S) PTE LTD.
NOJIMA CHEMICAL (S) PTE LTD
REED HYCALOG (SINGAPORE) PTE LTD.
SONY ELECTRONICS (SINGAPORE) PTE
SILTRONIC SAMSUNG WAFER PTE LTD
STAEROSPACE PTE LTD
PGS PRECISION PTE LTD
PHENG TAT PRECISION TOOLS PTE LTD
RACER TECHNOLOGY PTE LTD.
SANWA PLASTIC INDUSTRY PTE LTD
SCANIA PRECISION TOOLS
SEIKO INSTRUMENTS (S) PTE LTD
VIBRO POWER PTE LTD

SING LUN & COMPANY PTE LTD
SPI TECHNOLOGY PTE LTD
STATUS PRECISION ENGINEERING
TAI SENG PAINT PTE LTD
TEX-STAR ENGINEERING SINGAPORE PTE LTD
THERMOSENSOR TECHNOLOGIES PTE LTD
TONG FONG IRON WORKS PTE LIMITED
TOWA ASIA SINGAPORE MFG. PTE LTD.
UNION MOULD MANUFACTURING
X PRESS PRINT PTE LTD
YAM ENGINEERING WORKS
YAMAUCHI SINGAPORE PTE LTD
YIXIN PRECISION ENGINEERING PTE LTD
ZOOM ENGINEERING

HEALTHCARE INDUSTRY (DOCTORS & NURSES)

MINISTRY OF HEALTH (MOH)
NATIONAL KIDNEY FOUNDATION
ALEXANDRA HOSPITAL
REN CI HOSPITAL

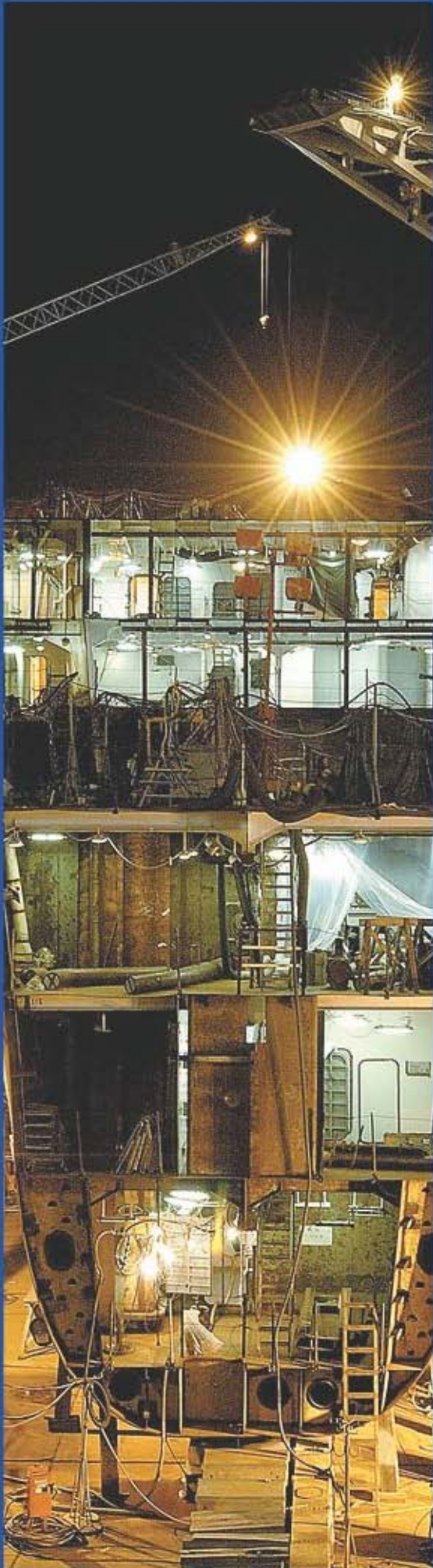
HOTEL INDUSTRY

AMARA HOTEL SINGAPORE
THE FULLERTON BAY HOTEL
MARINA BAY HOTEL PRIVATE LIMITED
ORCHARD HOTEL
MILLENNIUM & CAPTHORNE INTERNATIONAL LIMITED
THE RITZ-CARLTON, MILLENIA SINGAPORE

CONSTRUCTION INDUSTRY

ADVANCE INFRASTRUCTURE ENGINEERING PTE LTD
CHEMICRETE ENTERPRISES PTE LTD
COOLMAC SERVICES PTE LTD
CYCLECT ELECTRICAL ENGINEERING PTE LTD
DOLD TECH PTE LTD
DYNAMIC CONST & ENGINEERING PTE LTD
EXPAND CONSTRUCTION PTE LTD
GREENLEAF ENGINEERING PTE LTD
GREENLEAF INDUSTRIES PTE LTD
JIA YUE CONSTRUCTION PTE LTD
JSK CONSTRUCTION & PAINTING PTE. LTD.
KIMBUILD CONSTRUCTION PTE LTD
LIAN SOON CONSTRUCTION PTE LTD
MEMIONTEC PTE LTD
MODERN ENGINEERING & BUILDING SERVICES PTE LTD
NPC METAL WORKS PTE LTD
PENTA OCEAN CONSTRUCTION CO. LTD.
RELIANCE SAFETY GLASS PTE LTD
SKILLTECH ALUMINIUM CONSTRUCTION PTE LTD
SPAZION CONCEPTS PTE LTD
TEAM GLASS CONSTRUCTION PTE LTD
TECSON ENGINEERING PTE LTD
TENDA EQUIPMENT & SERVICES PTE LTD
ZIEN DYNAMIC CONSTRUCTION PTE LTD





MARINE INDUSTRY

JPL SERVICES PTE LTD.
JURONG MACHINE), AND AUTOMATION PTE LTD
JURONG SHIP YARD PTE. LTD
JURONG SML PTE LTD.
KOK CHAN MARINE SERVICES
KONG HENG METAL POLISHING CO.
SEAH MARINE ENGINEERING PTE LTD
ALLIANCE MARINE ENGINEERING PTE LTD
ALPINE ENGINEERING SERVICES PTE LTD
GREEN OCEAN MARINE & ENGINEERING PTE LTD
HONG YIAP ENGINEERING PTE LTD
KAN ENGINEERING PTE LTD
RAM JAI RAM GENERAL CONTRACTOR
RAM SRI RAM GENERAL CONTRACTOR PTE LTD
SEANET MARINE ENGINEERING SERVICES PTE. LTD.
WARTSILA SINGAPORE PTE LTD

MALAYSIA

CHING YEE MOULD INDUSTRIES SDN BHD
SANICHI PRECISION MOULD SDN BHD
NAMLEE METALS SDN BHD

CHINA

SHANGHAI HOPPT MECHANISM MANUFACTURERS CO. LTD
GDTECH

DUBAI

AL BASTI & MUKTHA L.L.C.,

Contact Us.....

C. SIVA C.E.O.

Global Placement Center

9 / 8A, 1st Floor, Ambalavanar Street,
100 Feet Road, Arumbakkam, Chennai – 600 106,

Ph: 0091-44-24751113

Fax: 0091-44-43561319

admin@globalplacementcentre.com

gpcrecruitment@gmail.com

web : www.globalplacementcentre.com

H / Ph : +91 99406 70755